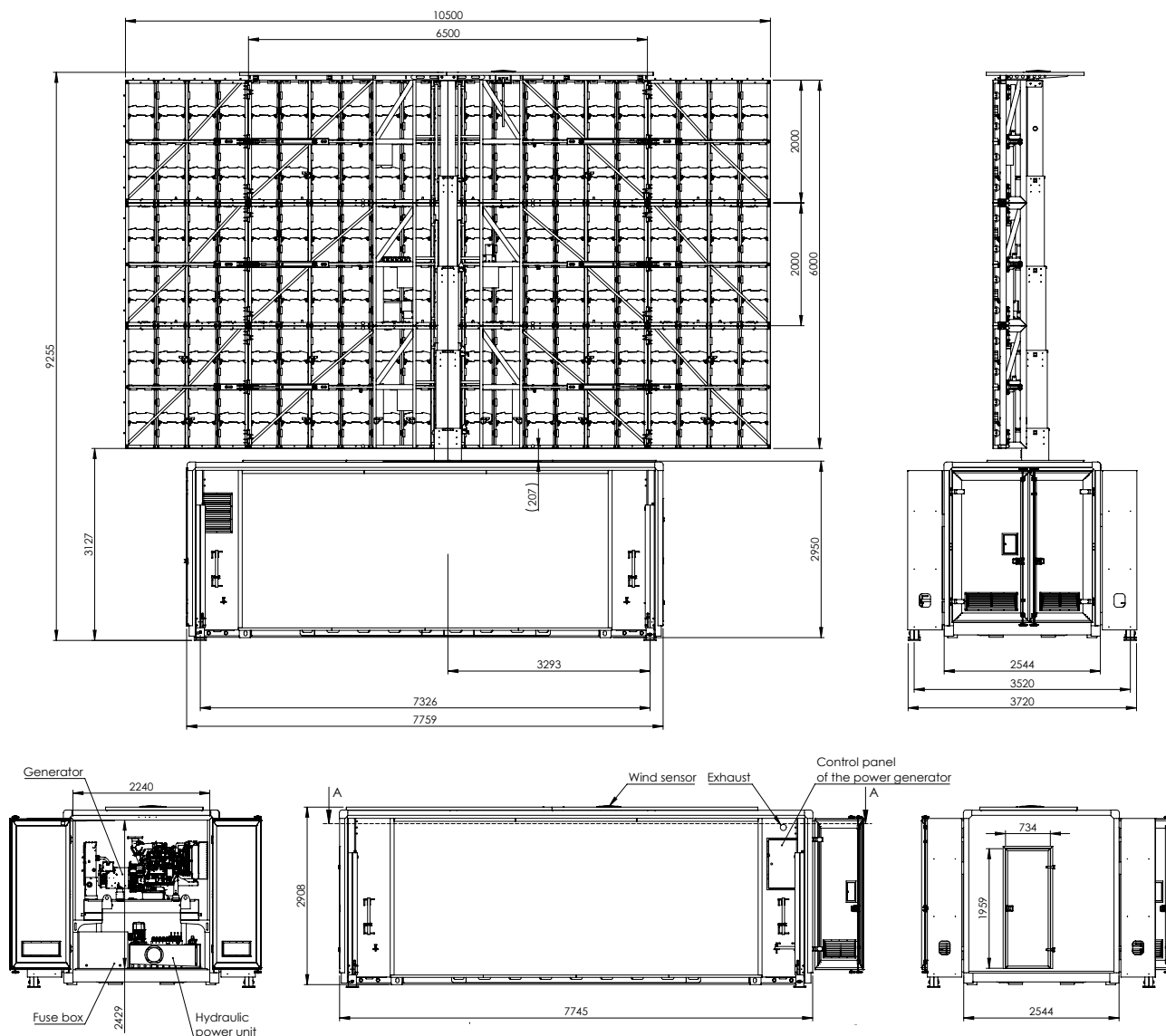


TRAILER SPECIFICATION

ContainerLED SLC63



DIMENSIONS FOR TRANSPORT

Length	7759 mm
Width	2544 mm
Height	2950 mm

DIMENSIONS WITH UNFOLDED SCREEN

Width	3720 mm
Length	10500 mm
Height to top of the screen	9255 mm
Height to bottom of the screen	3127 mm

WEIGHT

Maximum weight	16000 kg
Real weight with the screen	≈ 13000 kg
Real weight without the screen	≈ 11700 kg
Power generator weight	+ ≈ 1000 kg

LED SCREEN DETAILS

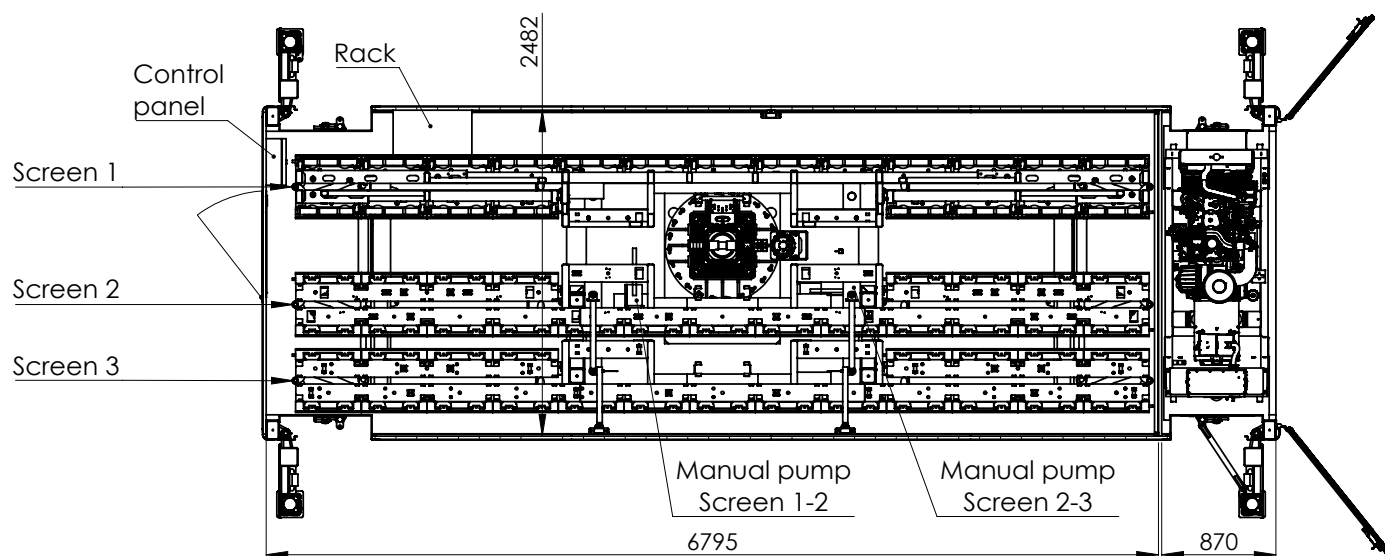
Area	63 m ²
Width	10,5 m
Height	6 m
Model	InfLED GXII (P3.91 or P4.63), InfLED AR (P3.91) or your LED screen
Resolution P3.91	2688 x 1536 px
Resolution P4.63	2268 x 1296 px
Videoprocessor	Novastar 3x VX65 (P3.91) or 3x VX45 (P4.63)

HYDRAULIC SYSTEM

Motor power	3,5 kW (400V)
Flow rate	9 dm ³ /min
Nominal pressure	13 MPa
Oil type	HL46 or HL32 (for lower temperatures)
Oil quantity	≈ 206 dm ³

POWER

Power socket	400V 125A
Power generator	for additional fee
GXII screen turned on Max. power consumption (InfLED GXII)	42,84 kW
GXII screen turned on Avg. power consumption (InfLED GXII)	14,24 kW
AR screen turned on Max. power consumption (InfLED AR)	34,02 kW
AR screen turned on Avg. power consumption (InfLED AR)	11,34 kW
Screen mast Power consumption (lifting, rotation)	3,5 kW
Other equipment Power consumption (wind sensor, video processor etc.)	max. 0,5 kW



CONSTRUCTION

Chassis	Galvanized, made according to DIN EN 13814 and DIN EN 13782
Mast	360° hydraulic rotated , galvanized and black powder coated
Mast and legs control	remote controller, hydraulic levers and emergency hand pump
Walls	Sandwich material (25 mm)
Color	in standard - silver (RAL 9006) additional fee - any from RAL
Wind rating	20 m/s (72 km/h) 15 m/s for TÜV norms (DIN EN 13814)
Wind sensor	according to DIN EN 13814 (with alarm)
Container system	BDF system (according to PN EN 284)

OTHER DETAILS

IP rating	IP65 (fully waterproof)
Loading and unloading	by hydraulic controlled legs
Paperwork	CE, static and stress calculations according to DIN EN 13814, TÜV Prüfbuch
Warranty	2 years