



# WORLD LEADER IN MOBILE LED SCREENS SOLUTIONS



**screen-led.com**  
Producer of mobile LED screens

**We make it simple  
by smart engineering.**



**RETURN**  
on **INVESTMENT** **1** **YEAR**

# WHY TO CHOOSE MOBILE LED SCREEN

**Mobile LED screen  
= Money saving**

Thanks to LED display trailer you need fewer people to prepare and maintain the screen. Most noteworthy you can offer better rates for your clients. If you already have many events scheduled, mobile LED screen is a win-win solution.



**Investment can pay for  
itself after just one year!\***

\* Depends on a number of events  
per year and trailer type.



**16**

**Years in the LED screens business.**

Our experience allows us to look more broadly at the solutions we propose. The past has taught us a lot, so our company is very stable.

**450**

**Mobile LED screens made.**

Almost half a thousand mobile LED screens are a solid portfolio. Our products work in both hot and cold regions of the world.

**38**

**Countries we deliver our products.**

Our trailers have been road-approved in so many countries that you will probably register them wherever you want. We also have experience in organizing transport that will not damage your product.

dated in May 2023

We make it simple by smart engineering.

**Our goal is to make your work easier. We focus on it when we create mobile LED screens.**

Functionality, usefulness, and reliability – focusing on these features allow us to create innovative and useful solutions. Each range of products we deal with was initially created for our needs. By creating mobile LED screens based on needs – our work solves customer problems. We want your investment to be profitable for you because your satisfaction is also our satisfaction.





Worldwide road approval  
(EU and US DOT)



Fully waterproof



TÜV supervision over manufacturing



Wind resistant 20 m/s (72 km/h)



High rate of returning customers



2 or 3 year warranty with option to extend



Even 4 weeks production time



Static calculations



Wind sensor with alarm



We accept financing



Precisely Right.



## Compare our mobile LED screens



SERIES	SimpLED	miniPlatformLED	PlatformLED	MobiLED	ContainerLED
<b>Product type</b>	open with cover	open with cover	open with cover	enclosed	enclosed container
<b>Axles</b>	AL-KO tandem axle	AL-KO single axle	AL-KO tandem axle	AL-KO tandem axle	-
<b>Screen area</b>	13.82 m <sup>2</sup>	up to 7 m <sup>2</sup>	up to 33.75 m <sup>2</sup>	up to 28 m <sup>2</sup>	up to 91 m <sup>2</sup>
<b>Screen size</b>	4.98 x 2.88 m	up to 3.5 x 2 m	up to 7.5 m x 4.5 m	up to 7 x 4 m	up to 13 x 7 m
<b>Screen rotation</b>	✓ manual	✗	✓ hydraulic	✓ hydraulic	✓ hydraulic
<b>Trailer / container width</b>	2.26 m	2.1 m	2.17 m	2.17 m	2.54 m
<b>Trailer / container length</b>	5.3 m + 1.5 m drawbar	3.64 m + 1.3 m drawbar	5.56 m + 1.6 m drawbar	5.59 m + 1.6 m drawbar	up to 13.5 m
<b>Maximum screen height (from ground to top)</b>	4.98 m	3.25 m	7 m or 6.5 m	7.1 m	up to 10.5 m
<b>Weight</b>	3000 kg	750 kg	3000 kg or 3500 kg	3500 kg	up to 16 000 kg
<b>Wind sensor with alarm</b>	✗	✓	✓	✓	✓
<b>Remote controller</b>	wired controller	wired controller	✓	✓	✓
<b>Power</b>	32A 3-phase	16A or 32A 1-phase	32A 3-phase	32A 3-phase	63A 3-phase or 125A 3-phase
<b>Power generator</b>	✗	✗	✓ (additional fee)	✓ (additional fee)	✓ (additional fee)
<b>Wind rating</b>	20 m/s (72 km/h)	20 m/s (72 km/h)	20 m/s (72 km/h)	20 m/s (72 km/h)	20 m/s (72 km/h)
<b>IP rating</b>	IP65 (fully waterproof)	IP65 (fully waterproof)	IP65 (fully waterproof)	IP65 (fully waterproof)	IP65 (fully waterproof)
<b>EU road approval</b>	✓	✓	✓	✓	✓
<b>US DOT road approval</b>	✓	✗	✓	✓	✓
<b>Warranty</b>	2 Years with option to extend	3 Years with option to extend	3 Years with option to extend	3 Years with option to extend	2 Years with option to extend



# SimpLED

Built on our extensive industry experience, we've designed a streamlined and efficient solution without compromising on key features. Enhance your event with this versatile addition to our product offerings. SimpLED is available in a single screen configuration, ideally suited for small to medium-sized events.



2 years warranty  
with option to extend



Worldwide road  
approval  
(EU and US DOT)



- Hydraulic lifting system powered by 12V battery
- Manual rotation
- Trailer body made from steel painted black
- Anti-slip and waterproof floor made from steel checker plate



Screen size:  
One size  
4.8 m x 2.88 m



Trailer weight range:  
up to 3000 kg



Trailer width:  
2.26 m



Trailer length with drawbar:  
5.3 m (+ 1.53 m drawbar)

This trailer is available with one screen type.

## Available with one type of the screen



### Rainproof fixed rental cabinets (IP65)

We have utilized a proven cabinet design, perfectly suited for SimpLED. The cabinets are tightly sealed and have been verified to be IP65 waterproof, offering great resistance against water intrusion.



### 720p resolution

With its HD resolution of 720p, the images displayed will remain clear and legible, even when viewed from a close proximity. The precise resolution stands at 1200 x 720 pixels, ensuring high-definition visuals.



Series	SimpLED
Trailer type	open with cover
Axles	AL-KO tandem axle
Screen area	13.82 m <sup>2</sup>
Screen size	4.8 m x 2.88 m
Screen type	Longrun P4
Screen resolution	HD (1280 x 720 px)
Possibility to install your screen	✗
Screen rotation	360° manual
Trailer width	2.26 m
Trailer length	5.3 m (+ 1.53 drawbar)
Maximum screen height (from ground to top)	4.98 m
Trailer weight (GVWR)	up to 3000 kg
Wind sensor with alarm	✗
Lifting / lowering the screen	By 12V hydraulic pump (wired controlled)
Power	32A 3-phase
Power generator	✗
Wind rating	72 km/h (20 m/s)
IP rating	IP65 fully waterproof
EU road approval	✓
US DOT road approval	✓ Ask for SimpLED USA (US adapted specification)

Warranty  
2 Years  
with option to extend

# miniPlatformLED

This mini LED trailer is available as a single and dual axle open platform trailer. It is possible to install up to 7 m<sup>2</sup> screens on these tiny trailers. Perfect solution for advertising as well as various outdoor events.



3 years warranty  
with option to extend



EU road approval



Perfect choice if you need a small, lightweight screen trailer that is easy to tow just by a regular car. A good solution for digital signage and advertising purposes. Features optional wind sensor.



Screen size:

up to 7 m<sup>2</sup>



Trailer weight range:

up to 750 kg



Trailer width:

2.1 m



Trailer length:

2.6 or 3.6 m  
+ about 1.35 m drawbar

If you have your own LED screen we can install it.

Model	SLMP4-lite	SLMP7-lite	CUSTOM
Trailer type	open with cover	open with cover	open with cover
Axles	AL-KO single axle	AL-KO single axle	AL-KO single axle
Screen area	3.75 m <sup>2</sup>	7 m <sup>2</sup>	up to 7 m <sup>2</sup>
Screen size	2.5 x 1.5 m	3.5 x 2 m	custom
Screen rotation	✗	✗	✗
Screen wings	✗	✗	custom
Trailer width	2.1 m	2.1 m	custom
Trailer length	2.6 m	3.6 m	custom
Maximum screen height (from ground to top)	3.26 m	3.26 m	custom
Trailer weight	750 kg	750 kg	up to 750 kg
Wind sensor with alarm	✓	✓	✓
Remote controller	wired controller	wired controller	wired controller
Power	16A	32A 1-phase	custom
Power generator	✗	✗	✗
Wind rating	20 m/s (72 km/h)	20 m/s (72 km/h)	20 m/s (72 km/h)
IP rating	IP65 (fully waterproof)	IP65 (fully waterproof)	IP65 (fully waterproof)
EU road approval	✓	✓	✓
US DOT road approval	✗	✗	✗
Warranty	2 Years with option to extend	2 Years with option to extend	2 Years with option to extend



# PlatformLED

Mobile LED screen that changes the way you work. PlatformLED allows you to quickly prepare your screen before any event! Available with or without the LED screen.



3 years warranty with option to extend



Worldwide road approval (EU and US DOT)



**Fully waterproof boxes**  
Numerous tests confirm that the boxes in this trailer are fully waterproof. You don't have to worry about your equipment on rainy days.

Convenient operation using remote controller  
Optional power generator (only for SLP15)  
Trailer body - Great design, Higher rear of the trailer, Modular waterproof boxes



**Screen size:**  
15 – 33.75 m<sup>2</sup>  
(161 – 363 ft<sup>2</sup>)



**Trailer weight range:**  
2000 – 3500 kg  
(4409 – 7716 lb)



**Trailer width:**  
2.1 m (6.9 ft)



**Trailer length:**  
5.5 – 6 m (18 – 19.7 ft)  
+ about 1.7 m (5.6 ft) drawbar

If you have your own LED screen we can install it.

Model	SLP15	SLP21	SLP28	CUSTOM
<b>Trailer type</b>	open with cover	open with cover	open with cover	open with cover
<b>Axles</b>	tandem axle	tandem axle	tandem axle	tandem axle
<b>Screen area</b>	15 m <sup>2</sup>	21 m <sup>2</sup>	28 m <sup>2</sup>	up to 33.75 m <sup>2</sup>
<b>Screen size</b>	5 x 3 m	6 x 3.5 m	7 x 4 m	up to 7.5 x 4.5 m
<b>Screen rotation</b>	✓	✓	✓	✓
<b>Screen wings</b>	✗	✓	✓	custom
<b>Trailer width</b>	2.17 m	2.17 m	2.17 m	custom (max. 2.5 m)
<b>Trailer length</b>	5.5 m	5.5 m	5.5 m	custom
<b>Maximum screen height (from ground to top)</b>	7.23 m	7.23 m	7.23 m	custom
<b>Trailer weight</b>	up to 3000 kg	up to 3500 kg	up to 3500 kg	up to 3500 kg
<b>Wind sensor with alarm</b>	✓	✓	✓	✓
<b>Remote controller</b>	✓	✓	✓	✓
<b>Power</b>	32A 3-phase	32A 3-phase	32A 3-phase	custom
<b>Power generator</b>	✓ (additional fee)	✗	✗	✗
<b>Wind rating</b>	20 m/s (72 km/h)	20 m/s (72 km/h)	20 m/s (72 km/h)	20 m/s (72 km/h)
<b>IP rating</b>	IP65 (fully waterproof)	IP65 (fully waterproof)	IP65 (fully waterproof)	IP65 (fully waterproof)
<b>EU road approval</b>	✓	✓	✓	✓
<b>US DOT road approval</b>	✓ Ask for PlatformLED USA (US adapted specification)	✓ Ask for PlatformLED USA (US adapted specification)	✓ Ask for PlatformLED USA (US adapted specification)	✓ Ask for PlatformLED USA (US adapted specification)

# MobiLED

Great choice when you need a LED screen trailer that offers more comfortable working conditions than PlatformLED. Its enclosed construction offers also much better screen protection. MobiLED is an excellent solution in areas with harsh climate conditions.



3 years warranty  
with option to extend



Worldwide road  
approval  
(EU and US DOT)



**Control room for video equipment.**  
Separate room inside of the trailer that serves as storage for the video equipment. Furthermore, we can customize it to the client's specific requirements.



**Protection and useful space**  
MobiLED with its enclosed walls offers the safety of your LED wall. It also creates space within the trailer that you can use in various ways.



- Enclosed design
- Advanced control room
- Convenient operation using remote controller
- Optional power generator (only for SLM15)



**Screen size:**  
15 – 28 m<sup>2</sup>  
(161 – 301 ft<sup>2</sup>)



**Trailer weight range:**  
up to 3500 kg  
(7716 lb)



**Trailer width:**  
2.17 m (7.1 ft)



**Trailer length:**  
5.5 m (18 ft)  
+ about 1.7 m (5.6 ft) drawbar

**If you have your own LED screen we can install it.**

Model	SLM15	SLM21	SLM28	CUSTOM
<b>Trailer type</b>	enclosed	enclosed	enclosed	enclosed
<b>Axes</b>	tandem axle	tandem axle	tandem axle	tandem axle
<b>Screen area</b>	15 m <sup>2</sup>	21 m <sup>2</sup>	28 m <sup>2</sup>	up to 28 m <sup>2</sup>
<b>Screen size</b>	5 x 3 m	6 x 3.5 m	7 x 4 m	custom
<b>Screen rotation</b>	✓	✓	✓	✓
<b>Screen wings</b>	✗	✓	✓	custom
<b>Trailer width</b>	2.17 m	2.17 m	2.17 m	custom (max. 2.5 m)
<b>Trailer length</b>	5.5 m	5.5 m	5.5 m	custom
<b>Maximum screen height (from ground to top)</b>	7.1 m	7.1 m	7.1 m	custom
<b>Trailer weight</b>	up to 3500 kg	up to 3500 kg	up to 3500 kg	up to 3500 kg
<b>Wind sensor with alarm</b>	✓	✓	✓	✓
<b>Remote controller</b>	✓	✓	✓	✓
<b>Power</b>	32A 3-phase	32A 3-phase	32A 3-phase	custom
<b>Power generator</b>	✓ (additional fee)	✗	✗	✗
<b>Wind rating</b>	20 m/s (72 km/h)	20 m/s (72 km/h)	20 m/s (72 km/h)	20 m/s (72 km/h)
<b>IP rating</b>	IP65 (fully waterproof)	IP65 (fully waterproof)	IP65 (fully waterproof)	IP65 (fully waterproof)
<b>EU road approval</b>	✓	✓	✓	✓
<b>US DOT road approval</b>	✓ Ask for MobiLED USA (US adapted specification)	✓ Ask for MobiLED USA (US adapted specification)	✓ Ask for MobiLED USA (US adapted specification)	✓ Ask for MobiLED USA (US adapted specification)



# ContainerLED

Great choice when you need a LED screen trailer that offers more comfortable working conditions than PlatformLED. Its enclosed construction offers also much better screen protection. MobiLED is an excellent solution in areas with harsh climate conditions.



2 years warranty  
with option to extend



- Self-loading system
- Based on BDF system
- Advanced control room
- Convenient operation using remote controller
- Optional power generator



Screen size:  
up to 91 m<sup>2</sup>  
(980 ft<sup>2</sup>)



Container weight range:  
up to 16 000 kg  
(35 274 lb)



Container width:  
2.54 m (8.3 ft)



Container length:  
7.3, 7.76 or 13.5 m  
(24, 25.5 or 45 ft)

If you have your own LED screen we can install it.

Model	SLC45	SLC63	CUSTOM
<b>Product type</b>	enclosed container	enclosed container	enclosed container
<b>Container type</b>	BDF	BDF	BDF
<b>Screen area</b>	45 m <sup>2</sup>	65 m <sup>2</sup>	72 m <sup>2</sup> or 91 m <sup>2</sup>
<b>Screen size</b>	9 x 5 m	10.5 x 6 m	12 x 6 m or 13 x 7 m
<b>Screen rotation</b>	✓	✓	✓
<b>Screen wings</b>	✓	✓	✓
<b>Container width</b>	2.54 m	2.54 m	2.54 m
<b>Container length</b>	7.3 m	7.76 m	13.5 m
<b>Maximum screen height (from ground to top)</b>	8.35 m	9.25 m	10.5 m
<b>Weight</b>	up to 16 000 kg	up to 16 000 kg	up to 16 000 kg
<b>Wind sensor with alarm</b>	✓	✓	✓
<b>Remote controller</b>	✓	✓	✓
<b>Power</b>	63A 3-phase	125A 3-phase	125A 3-phase
<b>Power generator</b>	✓ (additional fee)	✓ (additional fee)	✗
<b>Wind rating</b>	20 m/s (72 km/h)	20 m/s (72 km/h)	20 m/s (72 km/h)
<b>IP rating</b>	IP65 (fully waterproof)	IP65 (fully waterproof)	IP65 (fully waterproof)
<b>EU road approval</b>	✓	✓	✓
<b>US DOT road approval</b>	✓ Ask for ContainerLED USA (US adapted specification)	✓ Ask for ContainerLED USA (US adapted specification)	✓ Ask for ContainerLED USA (US adapted specification)



# BoxLED

## Digital LED advertising van

Do you want to earn more from ads? Digital LED advertising van draws attention, so you will find advertisers much faster.

- 3-sided LED screen
- Product as a cargo, so you can use it stationary or mobile
- Power generator inside
- Possibility of remote ad control
- Fully mobile advertising



2 years warranty  
with option to extend



## BoxLED is available in 2 versions



### Complete vehicle

The vehicle is converted into BoxLED creating inseparable unit. Before reworking – the chosen truck needs to meet project requirements. Ask us for details, and we will find the best solution for you.



### Cargo

BoxLED is delivered to you as a separated load. It is design for selfassembly on flatbed truck. This option lets you change the base vehicle or use it / storage it detached.



Pixel pitch

from P3.9 to P5.9



Screen dimensions

Two sides - 11'5" x 6'7"  
Back - 6'7" x 6'7"



Screen control

Remote or inside the truck cabin

## Steps to prepare BoxLED as a cargo to work

①



### You need a platform truck to install a BoxLED

We have created BoxLED, which is cargo. Thanks to this, you can use this product stationary or mobile. All you need is a truck that has a platform body.

②



### Use forklift to put the BoxLED on a truck

We have made the installation process of BoxLED simple. The construction is prepared so that you can put the BoxLED on a truck using a regular forklift.

③



### Use screws to plug the BoxLED into a truck construction

For safety while driving, we have prepared a solution to screw the BoxLED to the truck structure. Of course, we are here to help in every process of using the product.

④



### Prepare a control space and turn on the screen

Just move the control cables inside the truck and you can prepare a place to operate the screen. You can use the PC inside the truck or we can set up a remote ad serving capability.



# TruckLED

For those who look for a fully self-sufficient solution, we have prepared mobile LED screens mounted on a vehicle. TruckLED equipped with generators enables you to set your screen wherever you need, without any limitations. Available as an enclosed or open version.



2 years warranty  
with option to extend



Open or enclosed body  
We can arrange your truck  
Advanced control room  
Self-sufficient mobile LED screen



**Screen size:**  
depends on the truck

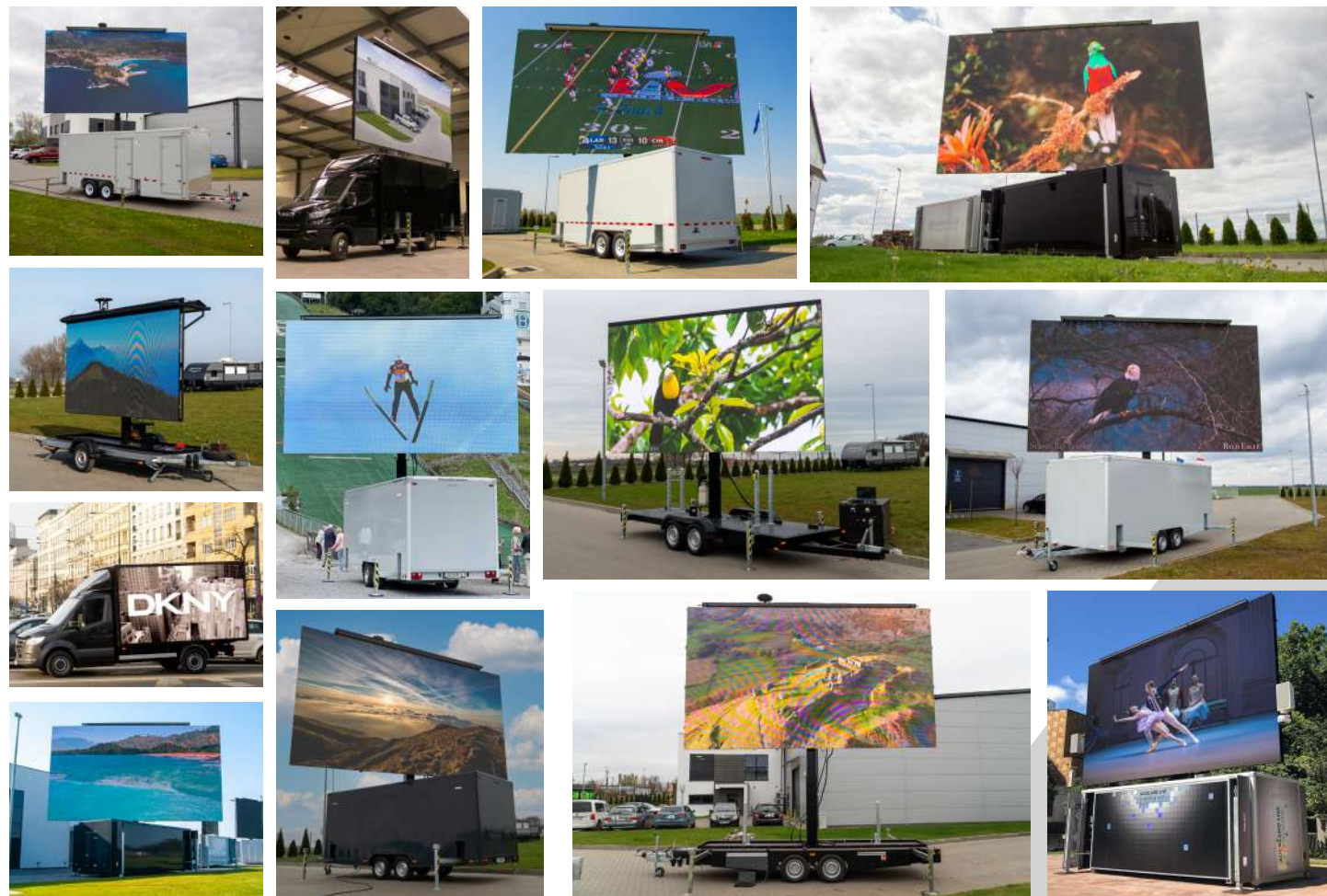


**Trailer weight range:**  
depends on the truck

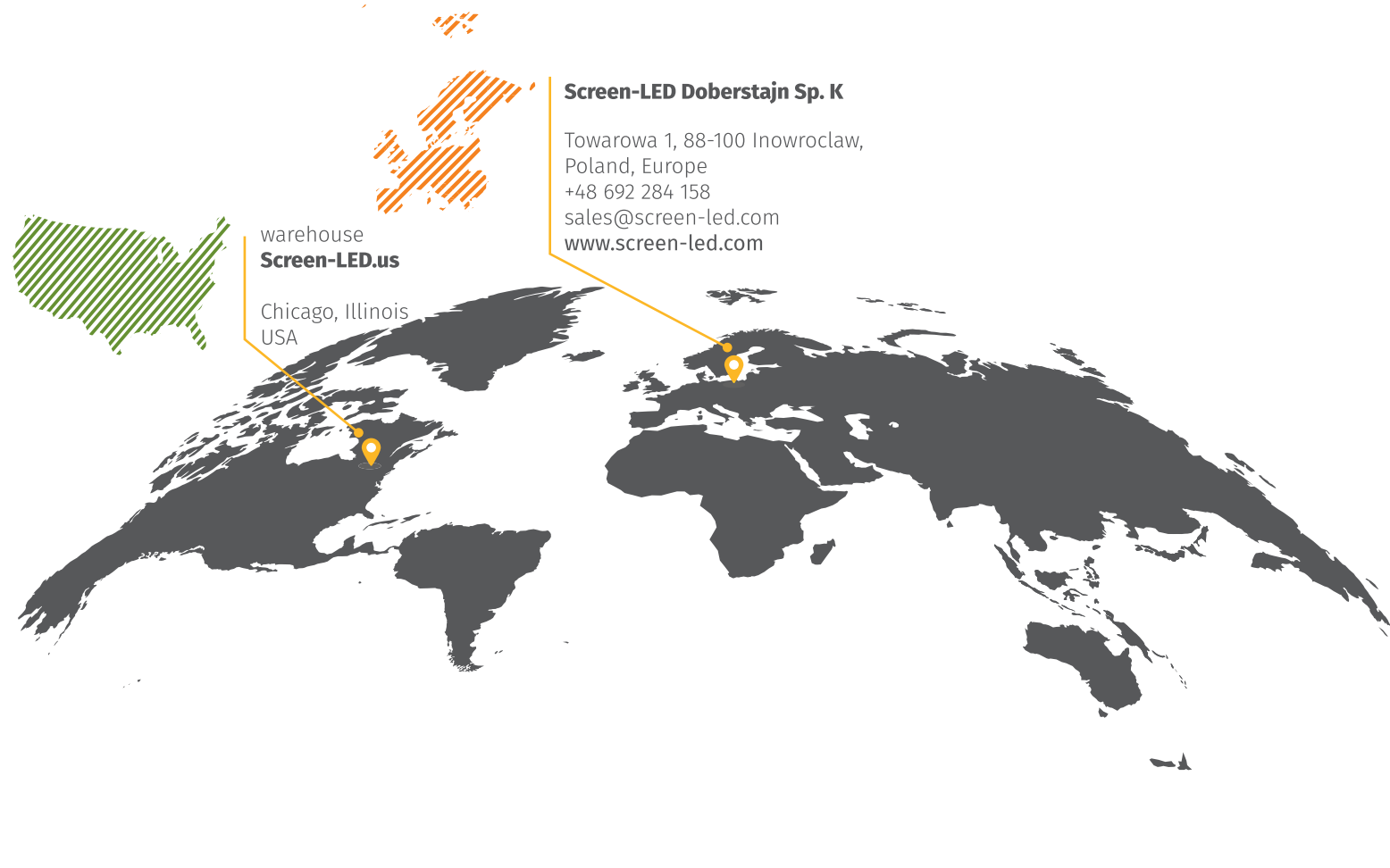
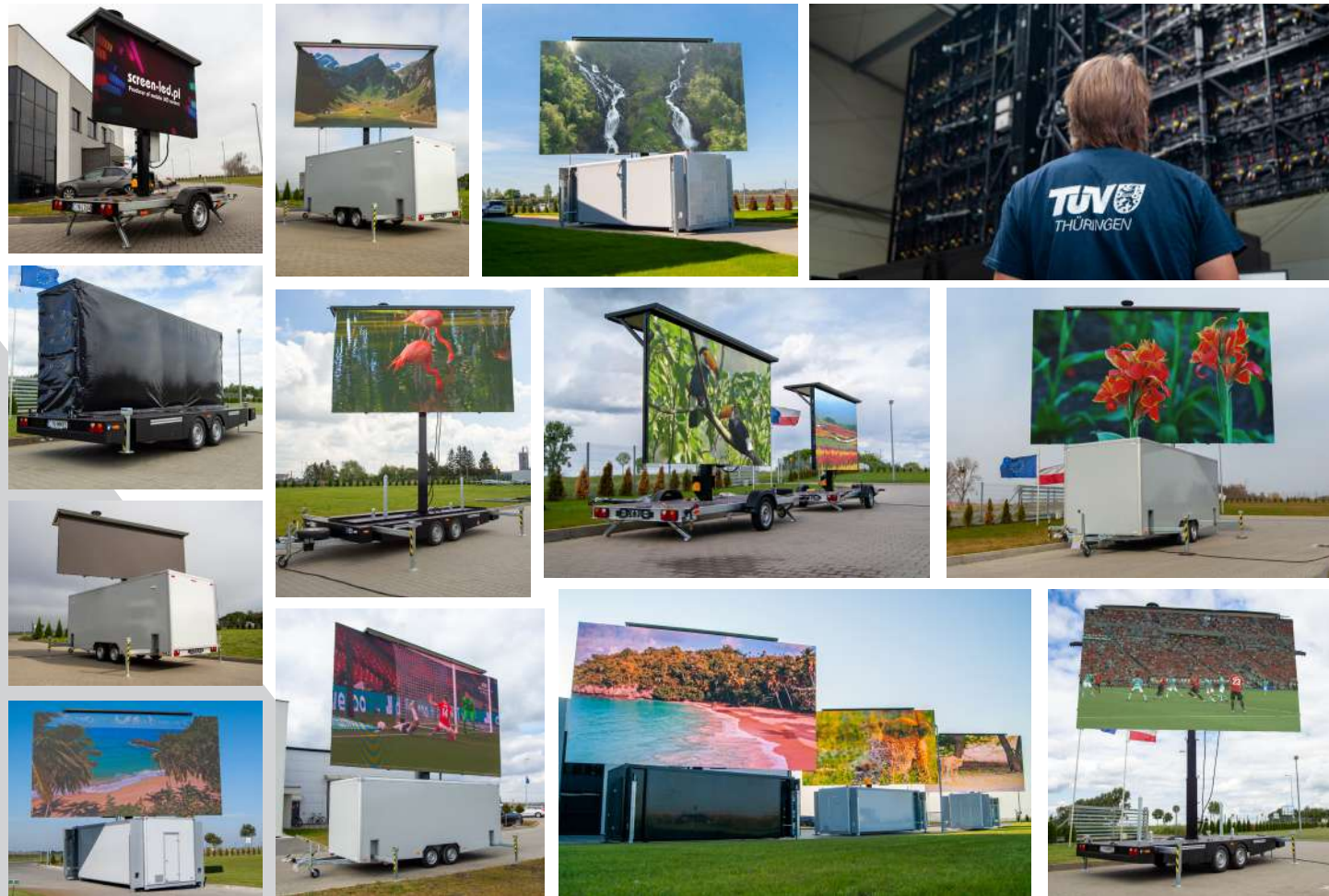


**Trailer length:**  
open (platform) or with walls

**If you have your own LED screen we can install it.**







warehouse  
**Screen-LED.us**  
 Chicago, Illinois  
 USA

**Screen-LED Doberstajn Sp. K**  
 Towarowa 1, 88-100 Inowroclaw,  
 Poland, Europe  
 +48 692 284 158  
 sales@screen-led.com  
 www.screen-led.com





**Screen-LED Doberstajn Sp. K.**

Towarowa 1, 88-100 Inowroclaw, POLAND

VAT (VIES): PL5562766307

**[www.screen-led.com](http://www.screen-led.com)**